

KBN CONNECTION

WINTER 2025
VOL. 16, ISSUE 1, EDITION 82

**WELCOME NEW KBN
BOARD MEMBERS!**

PIONEERING PAWS

*Vince the Facility Dog
Transforms Healthcare
Education at
Bellarmine University*

APRN COMPLIANCE CORNER

*Guarding Patient
Privacy: Essential
HIPAA Compliance
for APRNs*

REGULATION UPDATES

APPLY NOW
**2025 NURSE INCENTIVE SCHOLARSHIP
FUND (NISF) AWARD**

**AVOIDING DISCIPLINARY
ACTIONS**

@kyboardofnursing

kbn.ky.gov



**KENTUCKY
BOARD OF
NURSING**

Discover Nursing Career Opportunities



See for yourself why we were voted the "Best Place to Work!" for the past six years!



JOIN OUR TEAM

- ✓ Team-Centered Environment
- ✓ New-Graduate Tuition Reimbursement
- ✓ Educational Assistance Program
- ✓ Nurse Residency (Owensboro)
- ✓ Nurse Extern Program

Equal Employment Opportunity



Apply at OwensboroHealth.org/Careers

Questions? RecTeam@OwensboroHealth.org • 1-877-227-3841

Published by the

Kentucky Board of Nursing

312 Whittington Pkwy., Ste 300
Louisville, KY 40222-5172
Phone: 800-305-2042 or 502-429-3300
Fax: 502-429-3311
Web Address: <http://kbn.ky.gov>

KBN MISSION

The Kentucky Board of Nursing protects the public by development and enforcement of state laws governing the safe practice of nurses, dialysis technicians, and licensed certified professional midwives.

BOARD MEMBERS:

Audria Denker, RN – President
Erica Lemberger, RN – Vice President
Ashley Adkins, Citizen-at-Large
Jana Bailey, APRN
Melissa Bentley, RN
Alisha M. Clemons, MSN, APRN, FNP-C
Susan Ellis, RN
Sara Ferguson, CNM, APRN
Miriam Haas, RN
Jennifer Harpe-Bates, APRN
Jacob Higgins, RN
Darlena Jones, APRN
Hope Jones, RN
Ruth Martin, RN
Amber Powell, APRN
Karen Sherfey, LPN
Jane Smith, Citizen-at-Large
Dana Steffey, LPN,
Anne Venno, RN

EXECUTIVE DIRECTOR:

Kelly Jenkins MSN, RN, NE-BC

EDITOR:

Marvin Bright
marvin.bright@ky.gov

PUBLICATION GUIDELINES

Articles from guest authors may be submitted for publication in the KBN Connection. Priority will be given to subject matter regarding Kentucky nurses, dialysis technicians, and licensed certified professional midwives. Articles should not exceed 1,000 words in length unless approved by the Editor. **Contact KBN Connection Editor for more detailed instructions.**

KBN does not necessarily endorse advertisements contained herein. The publisher reserves the right to accept or reject advertisements for the **KBN Connection**.

Information published in the *KBN Connection* is not copyrighted and may be reproduced.

KBN would appreciate credit for the material used.

Direct questions or comments to KBN (KBNWebmaster@ky.gov).

 Publishing
PCI Concepts, Inc.

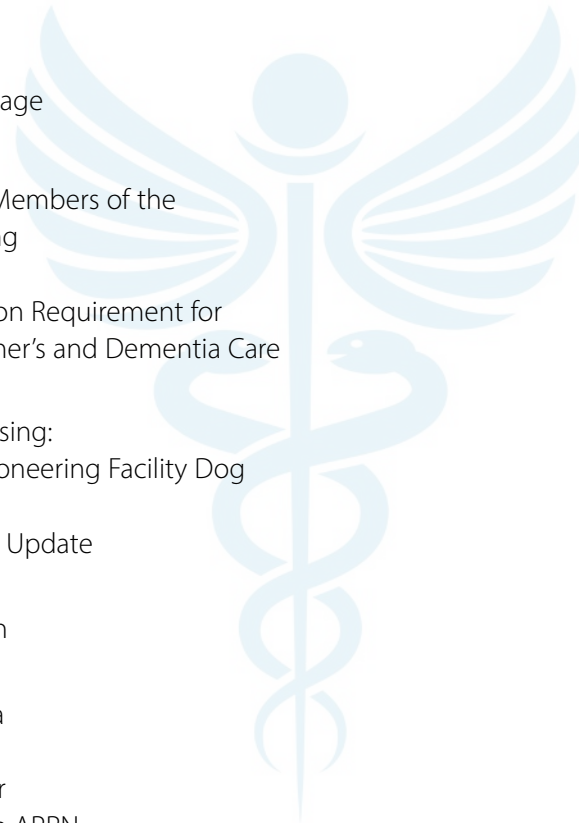


pcipublishing.com

Created by Publishing Concepts, Inc.
David Brown, President • 800.561.4686 ext 103
dbrown@pcipublishing.com
For Advertising info contact
Michele Forinash • 800.561.4686 ext 112
mforinash@pcipublishing.com

ThinkNurse.com

- 4 President's Message
- 5 Executive Director's Message
- 6 Welcoming the Newest Members of the Kentucky Board of Nursing
- 8 New Continuing Education Requirement for Kentucky Nurses: Alzheimer's and Dementia Care
- 11 Vince - The Knight of Lansing: Bellarmine University's Pioneering Facility Dog
- 12 Statutory and Regulation Update
- 14 Summary of Board Action
- 20 2023 KBN Workforce Data
- 27 APRN Compliance Corner
HIPPA Compliance for the APRN
- 34 Disciplinary Actions



STATISTICS CORNER

As of January 6, 2025
(in-state and out of state)

APRN-CNM: 150
APRN-CNP: 12,469
APRN-CNS: 123
APRN-CRNA: 1,746
CMA I: 1,377
CMA II: 10
DT CREDENTIAL: 584
LCPM: 38
LPN: 12,353
RN: 75,925
SANE Credential AA: 448
SANE Credential PA: 50
SRNA Certification: 43,581
TOTAL: 149,152

KBN Connection circulation includes 90,000 licensed nurses, nursing students, certified professional midwives and dialysis technicians in Kentucky.

KBN Connection is funded in large part by advertisements. A portion of the publication costs are paid for by state funds. *KBN Connection* is provided free of charge to its readers. KBN receives no funding from this publication.

The Kentucky Board of Nursing does not discriminate on the basis of protected classes: race, color, religion, sex, national origin, sexual orientation, gender identity, ancestry, age, disability, veteran status, or genetic information in employment or in the provision of services, and provides upon request reasonable accommodation necessary to afford individuals with disabilities an equal opportunity to participate in all programs and activities.



President's Message

Dear Kentucky Nurses,

As we step into the new year, I want to take a moment to reflect on our collective journey and look forward to the opportunities ahead. It is an honor to serve as your Kentucky Board of Nursing (KBN) President and to work alongside such dedicated and compassionate professionals. Your commitment to excellence in nursing has always been the cornerstone of healthcare in the Commonwealth, and for that, I extend my heartfelt gratitude.

The past year has brought challenges that tested our resilience and adaptability. Yet, time and again, Kentucky nurses have risen to the occasion, demonstrating unparalleled strength and unwavering dedication. Whether providing bedside care, leading innovative research, advancing public health, or mentoring the next generation of nurses, your contributions have been nothing short of extraordinary.

Looking ahead, the KBN is committed to supporting you in your essential work by ensuring the highest standards of nursing practice and fostering professional growth. This year, we aim to:

1. **Enhance Patient Safety:** Our mission is centered on protecting the public. The Board of Nursing remains steadfast in this mission, working diligently with board members and constituents to uphold the highest standards of care.
2. **Support Workforce Well-Being:** We understand the physical and emotional demands of nursing. The KBN is collaborating with the state and other organizations to ensure a strong pipeline of new nurses while also providing support to our existing nursing workforce.
3. **Expand Educational Opportunities:** The KBN awards approximately 130 nursing scholarships annually utilizing Nurse Incentive Scholarship Funds (NISF). Students enrolled in a nursing program can apply for the award each year. The NISF 2025-2026 application period is now open, from January 1, 2025, to May 31, 2025, providing vital support for nursing education.
4. **Leverage Technology and Data:** We continue to work on updating our systems to be more efficient and user-friendly. The KBN Nurse Portal will become mobile-friendly at the end of January. Nurses will be able to access their nurse portal account via their phone, iPads, tablets, etc. This will allow nurses to submit applications, including the annual renewal, upload documents, send messages, and update information related to their licensure from their mobile devices.

As we embrace the promise of a new year, I encourage each of you to reflect on your achievements, set meaningful goals, and continue to advocate for yourselves and your patients. You are the heart of healthcare in Kentucky, and together, we will navigate whatever challenges lie ahead with courage, compassion, and collaboration.

Yours in Nursing,

A handwritten signature in black ink that reads "Audria Denker, DNP, RN, FAADN".

Audria Denker, DNP, RN, FAADN, ANEF
President, Kentucky Board of Nursing

Executive Director's Message



Dear Kentucky Nurses,

As we welcome the new year, I want to take this moment to reflect on and celebrate a group of unsung heroes who work tirelessly to support and advance the nursing profession in Kentucky: the dedicated staff of the Kentucky Board of Nursing (KBN).

The mission of KBN is to protect public health and uphold the highest standards of nursing practice. This important work is made possible by the expertise, compassion, and commitment of our exceptional staff. Their efforts empower nurses across the Commonwealth to excel in their roles and serve their communities with excellence.

Allow me to share how each branch of our team contributes to the success and strength of the nursing profession in Kentucky:

- **Executive Branch:** With visionary leadership, this team ensures that KBN's policies and operations align with our mission, providing strategic oversight that guides our initiatives and ensures success.
- **Administrative Branch:** As the backbone of our organization, this team manages communications, logistics, and other essential functions, ensuring seamless operations across all KBN activities.
- **Information Management Branch:** In today's technology-driven world, this branch safeguards data, maintains system efficiency, and develops innovative solutions to enhance our ability to serve Kentucky nurses.
- **Licensure Branch:** This team ensures that licensure, certification, and renewal processes are handled with precision and efficiency, enabling nurses to focus on their vital work without unnecessary delays.
- **Investigation Branch:** Committed to upholding the integrity of the nursing profession, this team conducts thorough and impartial investigations into potential violations, fostering public trust and accountability.
- **Compliance Branch:** Overseeing the KARE (Kentucky Alternative Recovery Effort) program and other monitoring initiatives, this branch prioritizes patient safety while supporting nurses in maintaining professional accountability.
- **Legal Branch:** Providing expert guidance, this team ensures that all KBN decisions adhere to regulatory frameworks and uphold fairness and equity in every action.
- **Education Branch:** Focused on excellence in nursing education, this branch ensures that nursing programs and educators across the state maintain high standards that prepare the next generation of nurses.
- **Practice Branch:** In an evolving healthcare landscape, this team provides invaluable guidance to nurses, helping them navigate new standards and expectations while ensuring the highest quality of care.

As nurses, your dedication profoundly impacts patients and communities across the Commonwealth. In turn, the KBN staff is honored to support you, working tirelessly behind the scenes to ensure the strength, innovation, and respect of the nursing profession in Kentucky.

Let us take a moment to celebrate the collective efforts of the KBN team and their unwavering commitment to advancing nursing excellence. Together, with their support, we are shaping a healthier and brighter future for the Commonwealth.

Sincerely,

A handwritten signature in black ink that reads "Kelly Jenkins". The signature is written in a cursive, flowing style.

Kelly Jenkins MSN, RN, NE- BC
Executive Director, Kentucky Board of Nursing

Welcoming the Newest Members of the Kentucky Board of Nursing

The Kentucky Board of Nursing (KBN) is pleased to introduce our two newest Board members, appointed by Governor Andy Beshear this past fall. These esteemed professionals bring a wealth of experience and dedication to advancing the mission of KBN—ensuring the highest standards of nursing care and public safety throughout the Commonwealth.



Sara Ferguson, CNM, APRN

Sara Ferguson is a Certified Nurse-Midwife and the owner of WomanKind Midwifery, PLLC, an independent women's health practice. With a master's in nursing from the University of Kentucky and licenses in Kentucky and Ohio, Sara has dedicated her career to providing compassionate care, including pre- and postnatal care, gynecology, family planning, and support for natural childbirth. She has extensive experience in clinical practice, teaching, and facilitating group prenatal care through the Centering Pregnancy program. A leader in her field, Sara was actively involved with the Kentucky Board of Nursing's Advanced Practice Registered Nurse Advisory Council and is a member of the American College of Nurse Midwives.



Alisha M. Clemons, MSN, APRN, FNP-C

Alisha M. Clemons is an experienced and compassionate nurse practitioner specializing in infectious disease care at UK Healthcare in Lexington, KY. With a Master of Science in Nursing from Indiana Wesleyan University and ongoing studies toward her Doctor of Nursing Practice at Northern Kentucky University, Alisha combines her clinical expertise with a commitment to patient-centered care.


She is skilled in managing complex infectious disease cases, including hepatitis B and C, and serves as a key member of the Outpatient Parenteral Antimicrobial Therapy (OPAT) team. Her work also includes prescribing PrEP and PEP for HIV prevention and treating sexually transmitted infections. A dedicated educator, Alisha actively mentors healthcare students and prioritizes staying current through professional development and conferences.



Make a smart career move.
Enjoy *free tuition* to University of
Louisville for you and your family.
Imagine the possibilities.

A career at UofL Health comes with a bright future and incredible benefits. And now, the future is even brighter because **every employee and their immediate family members can enjoy free tuition to University of Louisville.** It's just one of many extraordinary benefits, including robust family health care plans for as little as \$150 per month. We believe in investing in you and the power of education. So become part of our team. It's a smart move. **For details visit UofLHealth.org/Imagine.**

U^{OF}L Health
THAT'S THE POWER OF **U**



New Continuing Education Requirement for Kentucky Nurses: Alzheimer's and Dementia Care

Starting July 15, 2024, a new continuing education (CE) requirement goes into effect for all Kentucky nurses, focusing on Alzheimer's disease and other forms of dementia. This initiative aims to equip nurses with critical knowledge to enhance patient care and improve outcomes for individuals affected by these conditions.

What You Need to Know

Who Needs to Complete This CE?

- **Licensed on or before July 15, 2024:** Nurses must complete the course by October 31, 2027.
- **Licensed after July 15, 2024:** Nurses have three years from their initial licensure date to complete the course.

How Many Hours Are Required?

- One (1) contact hour of nursing CE. This is a one-time requirement.

Required Topics

The CE course must cover the following topics:

- Recognizing the warning signs and symptoms of Alzheimer's disease and other dementias.
- Understanding the importance of early detection, diagnosis, and effective communication techniques for discussing memory concerns with patients and caregivers.
- Utilizing cognitive assessment and care planning billing codes.
- Exploring tools used for cognitive assessment.
- Reviewing current treatments available for patients.

Where Can You Take the Course?

The CE can be completed through any provider approved to offer nursing CE by the Kentucky Board of Nursing (KBN), another state board of nursing, or national nursing organizations listed in 201 KAR 20:220. While the KBN does not endorse a specific provider, it is offering a free online course to meet this requirement.

To access the free course and additional details, visit the KBN website at <https://kbn.ky.gov/continuing-education/Pages/Continuing-Education-Requirements.aspx>.

Important Reminders

- Each nurse is responsible for ensuring that the CE course meets their CE requirements.
- Maintain documentation of completed CE for at least five years, as this may be required in the event of an audit.

This new CE requirement reflects the growing need for healthcare providers to be well-versed in dementia care, offering nurses the tools to better serve their patients and communities. Don't wait—start planning now to fulfill this essential requirement and enhance your professional practice.



JOIN ONE OF THE BEST PLACES TO WORK IN KENTUCKY



To apply
scan or visit
[MyKDCareer.com](https://www.MyKDCareer.com)

 King's
Daughters



Vince - The Knight of Lansing: Bellarmine University's Pioneering Facility Dog

In a groundbreaking move for healthcare education, Bellarmine University's Lansing School of Nursing and Clinical Sciences has welcomed a new kind of faculty member—Vince, a facility dog whose presence marks a pioneering step in integrating therapy dogs into healthcare education in Kentucky. Trained by Paws with Purpose, a nonprofit organization accredited by Assistance Dogs International, Vince's arrival at Bellarmine is part of a broader initiative to incorporate non-traditional methods for student and faculty support. This accreditation ensures that Vince was trained according to the highest standards, focusing on creating respectful and effective human-animal relationships.

Vince's training journey began uniquely and humanely at the Kentucky Correctional Institution for Women (KCIW) in Pewee Valley. Here, inmates partnered with a volunteer weekend puppy trainer to nurture and educate Vince from about 8 weeks old, dedicating two years to his development using positive reinforcement techniques. This training method, free from any force or punishment, utilizes classical and operant conditioning to build behaviors founded on mutual trust, ensuring Vince's interactions are both gentle and effective.

The dog turned two years old on September 1, 2024, around the same time he started his official duties at Bellarmine. Dr. Leslie Leffler, Chair of the Undergraduate Nursing Program and an Assistant Professor at Bellarmine, has been instrumental in bringing Vince to campus. Dr. Leffler herself underwent nearly a year of extensive training to ensure a seamless integration of Vince into the academic environment, enhancing her understanding of managing a facility dog within an educational and healthcare setting.

Allison Ebelhar, a junior exercise science major at Bellarmine, also plays a crucial role as Vince's secondary handler. Ebelhar, like Dr. Leffler, engaged in extensive training sessions to learn the nuances of handling a facility dog and to develop a strong working relationship with Vince. This partnership underscores the collaborative efforts involved in bringing such a program to fruition, highlighting the community's involvement in Vince's integration.

At the Lansing School, Vince fulfills a dual role. His first is as a practical training tool for healthcare students, teaching them how to effectively incorporate therapy dogs into patient care to reduce anxiety, boost immune systems, and encourage active participation in rehabilitative activities. His second role is directly with the students, providing emotional support during high-stakes exams and visiting academic support courses for those grappling with challenging material.

The introduction of Vince has positioned Bellarmine's nursing program as a leader in Kentucky and the nation for innovative educational practices in healthcare. This initiative has made Bellarmine's nursing program a pioneer in Kentucky—and the second in the United States—to integrate a facility dog into an educational framework. This innovation has led to the launch

of "Bellarmine Unleashed," a program exploring the expansion of facility dogs into other areas of campus life, underscoring the university's commitment to holistic educational methods. This program aims to extend the therapeutic and educational benefits of facility dogs across campus, enhancing the well-being and academic success of the university community.

Followers can track Vince's campus activities and his contributions to student and faculty well-being on his social media pages, "Vince - The Knight of Lansing," available on Facebook and Instagram. Dr. Leffler expresses her aspirations for the future of the facility dog program at Bellarmine, noting that Vince consistently spreads joy across campus. She hopes that Vince will be the precursor to a larger group of facility dogs that will make Bellarmine their permanent home.

The extensive training necessary to prepare a facility dog like Vince incurs significant costs. Dr. Leffler invites those who are interested in fostering this innovative initiative to consider sponsoring a facility dog. Such sponsorships will help broaden the positive impact these animals have within educational environments.

Vince's story exemplifies the significant enhancement that non-traditional educational tools can bring to learning environments, offering emotional and educational support beyond textbooks and lectures. Bellarmine University remains at the forefront of innovative educational practices, with Vince leading the way. His presence paves the path for future facility dogs to positively impact the lives of students and educators alike.



Kentucky Administrative Regulations (KAR)

201 KAR 20:056

This administrative regulation regards Advanced Practice Registered Nurse (APRN) licensure and certification requirements. During the 2024 Regular Session the General Assembly passed House Bill (HB) 459, which amended KRS 314.042 to provide for provisional licensure of APRNs who have not passed their national certification exams.

The amendments:

- Provide that an APRN applicant who meets the regulatory requirements may request to be issued a 6-month provisional license.
- The applicant may use the title “advanced practice registered nurse applicant” and the abbreviation “APRNA”.
- The applicant may function as an APRN under the mentorship of another APRN or physician, except for prescribing medications.
- The APRNA shall take and pass the national certification exam, but if the APRNA fails to take and pass the national certification exam after two attempts, the provisional license is terminated.

Promulgation:

- On May 17, 2024, the Practice Committee considered and approved changes.
- On June 18, 2024, the Board considered and approved changes.
- On July 9, 2024, staff filed the regulation with the Legislative Research Commission (LRC).
- A public hearing on this administrative regulation was tentatively set for September 23, 2024, and written comments were due by September 30, 2024. A hearing was not requested, and comments were not received.
- On October 15, 2024, the regulation was considered by the Administrative Regulation Review Subcommittee (ARRS) and passed to Interim Joint Committee on Health Services (IJCHS) for consideration.
- On November 18, 2024, the regulation was considered and passed by the Interim Joint Committee on Health Services IJCHS.

201 KAR 20:057

This administrative regulation regards the scope and practice of APRNs.

The amendments:

- Update Material Incorporated by Reference (MIR); and
- Clear up language regarding running reports and documenting queries of the electronic prescription drug monitoring program system.
- Remove the exception that an APRN may prescribe Hydrocodone Combination Products beyond a 3-day supply as part of a Narcotic Treatment Program licensed by the Cabinet for Health and Family Services. This amendment was a response to public comments

Promulgation:

- On May 17, 2024, the Practice Committee considered and approved the changes.
- On June 18, 2024, the Board considered and approved the changes.
- On August 6, 2024, staff filed the regulation with the LRC.
- A public hearing on this administrative regulation has been tentatively set for October 21, 2024, but it was canceled. Written comments were due by October 31, 2024, and one was received on that date.
- On November 22, 2024, the Practice Committed considered the comments and passed them to the full board.
- On November 22, 2024, the full board held a special called meeting to consider the comments and the regulation was amended in response.
- On December 4, 2024, the Statement of Consideration was filed with the LRC. The Statement is attached with this report.
- On January 13, 2025, the regulation was considered at the meeting of the ARRS and it was passed to the legislative committees of jurisdiction for further consideration.

201 KAR 20:215

This administrative regulation regards continuing competency requirements. During the 2024 Regular Session the General Assembly passed HB 459, which amended KRS 314.073 to include a one-time continuing education (CE) requirement on the topics of dementia and Alzheimer’s.

The amendments:

- Include a one-time CE requirement on the topics of dementia and Alzheimer’s; and
- Clears up timing requirements for other one-time CEs.

Promulgation:

- On May 16, 2024, the Education Committee considered and approved the changes.
- On June 18, 2024, the Board considered and approved the changes.
- On July 9, 2024, staff filed the regulation with the LRC.
- A public hearing on this administrative regulation was tentatively set for September 23, 2024, and written comments were due by September 30, 2024. A hearing was not requested, and comments were not received.
- On October 15, 2024, the regulation was considered by the ARRS and passed to the IJCHS for consideration.
- On November 18, 2024, the regulation was considered and passed by the Interim Joint Committee on Health Services IJCHS

201 KAR 20:230

This administrative regulation regards the renewal of licenses.

The amendments:

- Remove language regarding the mailing of paper renewal applications; and
- Clarify the deadline for renewal applications that are to be submitted online.

Promulgation:

- On May 16, 2024, the Governance Committee considered and approved the changes.
- On June 18, 2024, the Board considered and approved the changes.
- On July 9, 2024, staff filed the regulation with the LRC.
- A public hearing on this administrative regulation was tentatively set for September 23, 2024, and written comments were due by September 30, 2024. A hearing was not requested, and comments were not received.
- On October 15, 2024, the regulation was considered by the ARRS and passed to the IJCHS for consideration.
- On November 18, 2024, the regulation was considered and passed by the Interim Joint Committee on Health Services IJCHS.

201 KAR 20:390

This administrative regulation regards the Nurse Incentive Scholarship Fund (NISF).

The amendments:

- Eliminate the collection of transcripts of award recipients, but requires proof of continued enrollment and graduation, and all award recipients will receive the same sum, conditioned upon proof of enrollment during the academic year.
- Allow for part-time enrollment, if permitted by the program of nursing.
- Eliminate the requirement for “full time” credit hours triggers the removal of the one-year cap on NISF eligibility for students in LPN prelicensure programs.
- Clarify the priority of past recipients during the selection process.
- Clarify upon graduation, no deferral exists for recipients who enroll in another more advanced nursing program; however, recognize part-time employment will satisfy work requirements.
- Clarify recordkeeping and monitoring processes.

Promulgation:

- On May 16, 2024, the Governance Committee considered and approved the changes.
- On June 18, 2024, the Board considered and approved the changes.
- On July 9, 2024, staff filed the regulation with the LRC.
- A public hearing on this administrative regulation was tentatively set for September 23, 2024, and written comments were due by September 30, 2024. A hearing was not requested, and comments were not received.

- On October 15, 2024, the regulation was considered by the ARRS and passed to the IJCHS for consideration.
- On November 18, 2024, the regulation was considered and passed by the Interim Joint Committee on Health Services IJCHS.
- A public hearing on this administrative regulation was tentatively set for September 23, 2024, and written comments were due by September 30, 2024.



Registered Nurses

Ready to advance your career?

Develop expertise

Treat varied conditions in our specialized hospitals

- Wound care
- Medically complex
- Infectious disease
- Cardiac conditions
- Renal disorders
- Brain injury
- Neurological conditions
- Pulmonary/ventilator liberation

Why Select Specialty Hospital?



Student loan payment assistance



On-going tuition assistance



100% company-paid RN to BSN scholarship



Clinical advancement program



Leader in post-acute recovery and rehabilitation



Nationwide career opportunities

Select Specialty Hospital - Central Kentucky, 217 S 3rd St., Danville, KY 40422



Scan this QR code to **learn more** and **apply**.

Go *anywhere* with us.

SUMMARY OF BOARD ACTIONS

BOARD MEETING – OCTOBER 24, 2024

PRESIDENT'S REPORT

Audria Denker, Board President, thanked KBN staff for all of their hard work planning the Board retreat this year. She also commended Kelly Jenkins, KBN Executive Director, for putting Kentucky on the map with NCSBN. She has been asked to speak at various conferences, specifically regarding Kentucky being the first state to decriminalize medical errors, which is garnering a lot of attention around the country.

FINANCIAL OFFICER'S REPORT

- It was moved and seconded to accept the financial officer's report, which was approved by acclamation.

EXECUTIVE DIRECTOR'S REPORT

Kelly Jenkins, Executive Director, presented the Executive Director's report and included information on the following: Operations [ORBS; Laserfiche; Workforce Projection Model; Medicinal Cannabis and CMA applications; NCSBN Medication Aide Certification Exam]; Professional Development; Personnel; Training for Board Members

- It was moved and seconded to accept the Executive Director's report, which was approved by acclamation.

Hearing Dates and Panel Member Selections

The 2024-25 hearing dates and panel member selections was provided for information only.

GENERAL COUNSEL'S REPORT

Jeff Prather, General Counsel, presented the General Counsel's Report.

- It was moved and seconded to accept the General Counsel's report, which was approved by acclamation.

CREDENTIALS REVIEW PANEL

- It was moved and seconded to accept the reports of the August 15, 2024, and September 19, 2024 Credentials Review Panel meetings, which were approved by acclamation.

EDUCATION COMMITTEE

Education Committee Report – September 19, 2024

- It was moved and seconded to accept the September 19, 2024 Education Committee report, which was approved by acclamation. The following committee recommendations were moved and seconded and were approved by acclamation after discussion and presentation of background materials:

Education committee objectives

- The Education Committee Objectives for 2024-2025 be approved as presented.

Education committee scope and functions

- The Education Committee Scope and Functions for 2024-2025 be approved as presented.

American National University ASN site visit

- The requirements to be met as stated in the site visit report be approved with quarterly progress reports providing evidence to those requirements, beginning October 31, 2024, and American National University Associate Program Pikeville, Ky, and remain an approved program of nursing and a follow-up site visit to be conducted in March of 2025.

Galen College of Nursing – Louisville ASN site visit

Audria Denker and Hope Jones recused themselves from the discussion and vote due to employment. Erica Lemberger assumed the duties of Meeting Chair, and Jacob Higgins assumed the Education Chair duties.

- The requirements to be met as stated in the site visit report be approved with quarterly progress reports providing evidence to those requirements, beginning December 31, 2024, and Galen College Associate Program Louisville, Ky remain an approved program of nursing

Galen College of Nursing – Louisville PN site visit

Audria Denker and Hope Jones recused themselves from the discussion and vote due to employment. Erica Lemberger assumed the duties of Meeting Chair, and

Jacob Higgins assumed the Education Chair duties.

- The requirements to be met as stated in the site visit report be approved with quarterly progress reports providing evidence to those requirements, beginning June 30, 2025, and Galen College Practical Program Louisville, Ky remain an approved program of nursing.

Consideration of conditional status or timeframe for programs of nursing on initial status

- A workgroup of Education Committee members be formed to explore a potential conditional status for programs of nursing on initial status. The following committee members volunteer to serve on the workgroup:
 - Susan Ellis
 - Ruth Martin
 - Karen Sherfey
 - Erica Lemberger (Ex-officio)

Program administrator turnover concerns

- A workgroup of Education Committee members be formed to look at program administrator turnover and any associated regulations. The following committee members volunteer to serve on the workgroup:
 - Jacob Higgins
 - Hope Jones
 - Missy Bentley
 - Erica Lemberger (Ex-officio)

PRACTICE COMMITTEE

Practice Committee November September 20, 2024 Report

- It was moved and seconded to accept the September 20, 2024 Practice Committee report, which was approved by acclamation. The following committee recommendations were moved and seconded and were approved by acclamation after discussion and presentation of background materials:

Practice committee scope and functions

- The 2024-2025 Practice Committee Scope and Functions, as revised, be approved.

Practice committee objectives

- The 2024-2025 Practice Committee Objectives, as revised, be approved.

ADVISORY OPINION STATEMENTS

AOS #8 Role of nurses in the perioperative setting

- Advisory Opinion Statement (AOS) #8 Role of Nurses in the Perioperative Setting, be approved by the Board, with specified revisions.

AOS #3 Recommended course content infusion therapy for registered nurses and licensed practical nurses

- Advisory Opinion Statement (AOS) #3 Recommended Course Content Infusion Therapy for Registered Nurses and Licensed Practical Nurses, be approved by the Board, as submitted.

AOS #11 Role of nurses in the performance of gastrointestinal and genitourinary procedures

- Advisory Opinion Statement (AOS) #11 Role of Nurses in the Performance of Gastrointestinal and Genitourinary Procedures, be approved by the Board, as submitted.

Additionally, the following action was moved and seconded and approved by acclamation:

- AOS #11 be revised to include LPNs in item #1 related to delegation of tasks.

AOS #19 Responsibility and accountability for patient care assignments and nursing care delivery

- Advisory Opinion Statement (AOS) #19 Responsibility and Accountability for Patient Care Assignments and Nursing Care Delivery, be approved by the Board, as submitted.

Additionally, the following action was moved and seconded and approved by acclamation:

- The reporting requirements on page 3 of AOS #11 be revised to state the following:
 - The appropriate CMS-approved accrediting organization.

AOS #41 RN/LPN scope of practice determination guidelines

- Advisory Opinion Statement (AOS) #41 RN/LPN/APRN Scope of Practice Determination Guidelines, be approved by the Board, with specified revisions.

FY 2023-24 Practice Inquiry Report

The FY 2023-24 practice inquiry report was provided for information only,

CONSUMER PROTECTION

COMMITTEE

Consumer Protection Committee September 19, 2024 Report

- It was moved and seconded to accept the September 19, 2024 Consumer Protection Committee report, which was approved by acclamation. The following committee recommendations were moved and seconded and were approved by acclamation after discussion and presentation of background materials:

Proposed changes to consent decree guidelines

- The proposed changes to the consent decree guidelines be approved as written.

Proposed changes to disciplinary actions and APRN disciplinary actions guidelines

- The proposed changes to the disciplinary actions and APRN disciplinary actions guidelines be approved as written.

Additional language to agreed orders and KARE agreements

- The proposed additional language to agreed orders and KARE agreements be approved as written.

Updated term in KARE program agreements

- The updated term in the KARE program agreements be approved as written.

GOVERNANCE COMMITTEE

Governance Committee September 19, 2024 Report

- It was moved and seconded to accept the September 19, 2024 Governance Committee report, which was approved by acclamation. The following committee recommendations were moved and seconded and were approved by acclamation after discussion and presentation of background materials:

Revised Strategic Plan

- A copy of the most current Strategic Plan was provided for information only.

Nomination of APRN Medical Cannabis Practitioner Board of Physicians and Advisors

- Thomas “Perry” Colley be accepted as the KBN nominee to the APRN Medical Cannabis Practitioner Board of Physicians and Advisors.

Kelly Jenkins presented, for information only, a joint statement of the Kentucky Boards of Medical Licensure, Nursing and Pharmacy regarding retail IV therapy. Once finalized, the statement will be posted on KBN’s website and social media. It will also be sent to professional organizations and all licensees.

Before moving to closed session, Anne Veno raised a question regarding the disciplinary guidelines, specifically violations for a positive drug screen, presented during the Consumer Protection Committee Report. After discussion, it was decided to un-strike “medical discrepancies” in the language regarding reprimands. Since this was a simple grammatical change, it did not require a vote.

ACTION ON LICENSES

- It was moved and seconded that 37 orders, with no exceptions filed, discussed in closed session be adopted, which were approved by acclamation.
- Miriam Haas and Anne Veno recused themselves from the discussion and vote on two orders due to a conflict of interest. It was moved and seconded that those two orders, discussed in closed session be adopted, and were approved by acclamation.
- It was moved and seconded that one order, with exceptions filed, discussed in closed session be adopted, which was approved by acclamation.

FINAL ORDER

The final order for Chris Dixon vs. KY Board of Nursing was presented in closed session for information only.

PERSONNEL ACTIONS

The personnel actions were provided for information only and discussed in closed session.

INFORMATION/ANNOUNCEMENTS

Other

The following items were provided for information only:

- KBN organizational chart, updated September 24, 2024

SUMMARY OF BOARD ACTIONS

BOARD MEETING – NOVEMBER 22, 2024

SWEARING IN OF NEW BOARD MEMBER

Sara Ferguson was sworn in by General Counsel, Jeff Prather, as an APRN Board member. Ms. Ferguson fills the vacancy created by Erica Lemberger's term expiration.

NEW BUSINESS

1. Consideration of Proposed Regulation Comments

201 KAR 20:057

KBN General Counsel, Jeff Prather, outlined the comments received regarding 201 KAR 20:057. The

following recommendations were moved and seconded and were approved by acclamation after discussion and presentation of background materials:

- Strike the language on page 12, section 10, item 14e.

SUMMARY OF BOARD ACTIONS

BOARD MEETING – DECEMBER 19, 2024

STAFF RECOGNITION

Andre Stuckey, Human Resources Administrator, recognized Sara Marvin, KBN Budget Support Specialist, for 20 years of service in Kentucky state government.

SWEARING IN OF NEW BOARD MEMBER

Alisha Clemons was sworn in by General Counsel, Jeff Prather, as an APRN Board member. Ms. Clemons fills the vacancy created by Dana Steffey's term expiration.

ELECTION OF KBN VICE PRESIDENT

Erica Klimchak, Administrative Assistant, conducted the election of the FY2025-26 KBN Vice President via electronic ballot. Jacob Higgins was elected Vice President.

PRESIDENT'S REPORT

Audria Denker, Board President, thanked the agency staff for all of their work throughout the year supporting nurses across the state. KBN has made some major accomplishments this year, and everyone's work is appreciated.

FINANCIAL OFFICER'S REPORT

- It was moved and seconded to accept the financial officer's report, which was approved by acclamation.

EXECUTIVE DIRECTOR'S REPORT

Kelly Jenkins, Executive Director, presented the Executive Director's report and included information on the following: Operations [Laserfiche; *Workforce Projection Model*]; *Professional Development*; *Personnel*; *Training for Board Members*

- It was moved and seconded to accept the Executive Director's report, which was approved by acclamation.

Dialysis Technician Advisory Council Nominations

Dr. Denker explained that there are three (3) open seats on the DT Advisory Council that require approval. Two fill DT member spots, and one fills the nurse member spot. After discussion and presentation of background materials, the following nominees were selected to serve on the DT Advisory Council:

- Brandy Bradley – DT member
- Jaycee Padilla – DT member
- Roseshay Simmons – nurse member
- It was moved and seconded to accept the nominees outlined above as new DT Advisory Council members.

Updated Hearing Dates and Panel Member Selections

An updated list of the 2024-25 hearing dates and panel member selections was provided for information only.

GENERAL COUNSEL'S REPORT

Jeff Prather, General Counsel, presented the General Counsel's Report.

- It was moved and seconded to accept the General Counsel's report, which was approved by acclamation.

201 KAR 20:057 Statement of Consideration

The 201 KAR 20:057 statement of consideration was provided for information only.

Approval of CAPA-CS Committee Report

- The CAPA-CS Committee Report be approved as presented.

KBN has 90 days to respond, and will bring draft to Governance for approval, and then the full Board.

CREDENTIALS REVIEW PANEL

- It was moved and seconded to accept the reports of the October 24, 2024, and November 21, 2024 Credentials Review Panel meetings, which were approved by acclamation.

EDUCATION COMMITTEE

Education Committee Report – November 21, 2024

- It was moved and seconded to accept the November 21, 2024 Education Committee report, which was approved by acclamation. The following committee recommendations were moved and seconded and were approved by acclamation after discussion and presentation of background materials:

Kentucky State University BSN program update

- Kentucky State University be moved from Initial to Approved status.

Asbury BSN Wilmore, KY proposal

- The Asbury BSN, Wilmore, KY proposal be approved as written, and the program be moved to Developmental Status.

Big Sandy CTC LPN Pikeville, KY proposal

- The Big Sandy CTC LPN, Pikeville, KY proposal be approved as written, and the program be moved to Developmental Status.

Elizabethtown CTC letter of intent, PN program, Leitchfield, KY

- The Elizabethtown CTC Letter of Intent, PN Program – Leitchfield, KY be approved as written.

JCTC ASN site visit – Shelbyville, KY

- The requirements to be met as stated in the site visit report be approved with quarterly progress reports providing evidence to those requirements, beginning January 31, 2025, with a focused site visit October 2025, and the Jefferson Community and Technical College - Shelbyville Campus Associate Degree Nursing program, Shelbyville KY, remain on initial status.

Midway University BSN site visit

- The requirements to be met as stated in the site visit report be approved with semi-annual progress reports providing evidence to those requirements, beginning January 31, 2025, and Midway University Bachelor of Science in Nursing, Midway KY be moved from initial to approval status.

University of the Cumberlands ASN site visit – Williamsburg, KY

- Approve the requirements to be met as stated in the site visit report with semi-annual progress reports providing evidence to those requirements, beginning June 30, 2025, and University of the Cumberlands Associate Nursing Program, Williamsburg KY, remain on initial status until benchmarks are met

PRACTICE COMMITTEE

Practice Committee November 22, 2024 Report

- It was moved and seconded to accept the November 22, 2024 Practice Committee report, which was approved by acclamation. The following committee recommendations were moved and seconded and were approved by acclamation after discussion and presentation of background materials:

Dialysis Technician Council scope and functions

- The 2024-2025 Dialysis Technician Council Scope and Functions be approved, by the Board, as submitted

Dialysis Technician Council objectives

- The 2024-2025 Practice Committee Objectives, as revised, be approved.

Continued on page 18>>

Advanced Practice Nursing begins here.

Are you looking for a graduate program that focuses on compassion, integrity, excellence and professionalism?
The graduate nursing programs at Murray State are made for you.



Choose from three specialties

- Family Nurse Practitioner, Nurse Anesthesia, and Post MSN
- FNP and MSN-DNP are 100% online
- Anesthesia - first year online

For more information, please contact
Dr. Kristin Reid, kreid3@murraystate.edu, 270.809.6670



School of Nursing and Health Professions
murraystate.edu/sonhp



WHO CARES FOR YOU WHEN YOU'RE CARING FOR OTHERS?

While you care for others, we're here to care for you. Join a team that prioritizes your well-being, offering support, resources, and a community that understands the importance of your work. Discover a workplace that values your dedication—because you matter.

Apply now to make a meaningful impact with a team that cares for you as much as you care for others.



To apply or learn more, scan the QR code, or visit
BaptistHealth.com/Careers/Nursing-Careers.



Corbin | Floyd | Hardin | La Grange | Lexington | Louisville | Madisonville | Paducah | Richmond

 BaptistHealth.com

ADVISORY OPINION STATEMENTS

AOS #36 Resuscitation Orders, Pronouncement of Death, and Death Certificates

- Advisory Opinion Statement (AOS) #36 Resuscitation Orders, Pronouncement of Death, and Death Certificates be approved, by the Board, as submitted.

201 KAR 20:057 Scope and standards of practice of advanced practice registered nurses

- 201 KAR 20:057 Scope and standards of practice of advanced practice registered nurses be amended, by the Board, as proposed at the special called Board meeting.

201 KAR 20:215 Continuing competency requirements

- 201 KAR 20:215 Continuing competency requirements, be amended, by the Board.

CONSUMER PROTECTION COMMITTEE

Consumer Protection Committee November 21, 2024 Report

- It was moved and seconded to accept the November 21, 2024 Consumer Protection Committee report, which was approved by acclamation. The following committee recommendations were moved and seconded and were approved by acclamation after discussion and presentation of background materials:

Consumer Protection Committee scope and functions

- The Consumer Protection Committee Scope and Functions be approved, by the Board, as submitted

Proposed guideline changes

- The revisions and additions made to Guidelines for Consent Decrees and Guidelines for Disciplinary Actions, and Guidelines for APRN Disciplinary Actions be approved as written.

Review updated term in KARE program agreements

- The updated term in the KARE program agreements, as written, be approved

GOVERNANCE COMMITTEE

- It was moved and seconded to accept the November 21, 2024 Governance Committee report, which was approved by acclamation.

ACTION ON LICENSES

- It was moved and seconded that 12 orders, with no exceptions filed, discussed in closed session be adopted, which were approved by acclamation.
- Miriam Haas and Anne Veno recused themselves from the discussion and vote on two orders due to a conflict of interest. It was moved and seconded that those two orders, discussed in closed session be adopted, and were approved by acclamation.
- It was moved and seconded that two orders, with exceptions filed, discussed in closed session be adopted, which were approved by acclamation.

PERSONNEL ACTIONS

The personnel actions were provided for information only and discussed in closed session.

HEARING TRANSCRIPT

A copy of the transcripts from the following hearings were provided for information only:

- KBN v. Rocío Plasencia
- KBN v. Sharon Brown

INFORMATION/ANNOUNCEMENTS

Other

The following items were provided for information only:

- KBN organizational chart, updated November 7, 2024



Advance Your Career at Med Center Health!

Med Center Health has options for you whether you're a new graduate or an experienced RN.

Current Offerings:

- Flexible Scheduling Options
- Float Pool Program
- Weekend Program
- New Graduate Residency

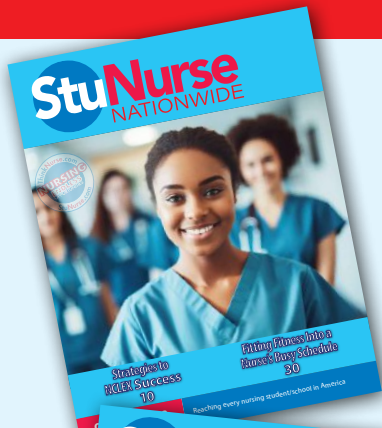
We'd love to help you find your place at Med Center Health!



SOUTH CENTRAL KENTUCKY

Learn more and apply by visiting [MedCenterHealth.org/careers](https://www.MedCenterHealth.org/careers) to explore our career opportunities.





FREE Subscription to **StuNurse** Nationwide Magazine!

Do you know someone who is a student nurse, or someone considering a nursing career?

Let them know they can sign up to receive the digital magazine free at: ThinkNurse.com/stunurse
Subscribe StuNurse.

Educators...

let your students know they can subscribe **free of charge!**




MIDWAY UNIVERSITY

**AFFORDABLE PROGRAMS
CONVENIENT CLASSES
ON CAMPUS OR ONLINE**

**NEW
MSN-MBA
Dual Degree**

Nursing degrees at every level:

- Associate's Degree (ADN)
- Bachelor of Science (BSN)
- Master of Science (MSN)
- ADN to MSN
- BSN to MSN
- RN-BSN

Apply Online Today at: midway.edu/nursing

**Baptist Health Deaconess
Madisonville Is
RECRUITING
REGISTERED NURSES**

Recruitment/Retention Bonus
▶ Up to \$15,000 sign-on bonus


BSN, MSN and ANCC certification incentives

Eligibility: RNs hired into full-time or part-time bedside staff nurse position

**Contact Laci Blue, Recruiter
at 270-825-7201 or
Laci.Blue@baptistdeaconess.com**

**BAPTIST HEALTH
DEACONESS
MEDICAL GROUP**

Interested candidates may apply at BaptistHealthDeaconess.com



2024 KBN Workforce Data

The Nursing Supply and Demand Dashboard is a product of the Kentucky Board of Nursing (KBN). Users have the ability to see information about nurses in five sections.

The first section, Nursing Supply, displays information around those with Kentucky Nursing Licensures. Information such as demographics and various employment metrics can be found here.

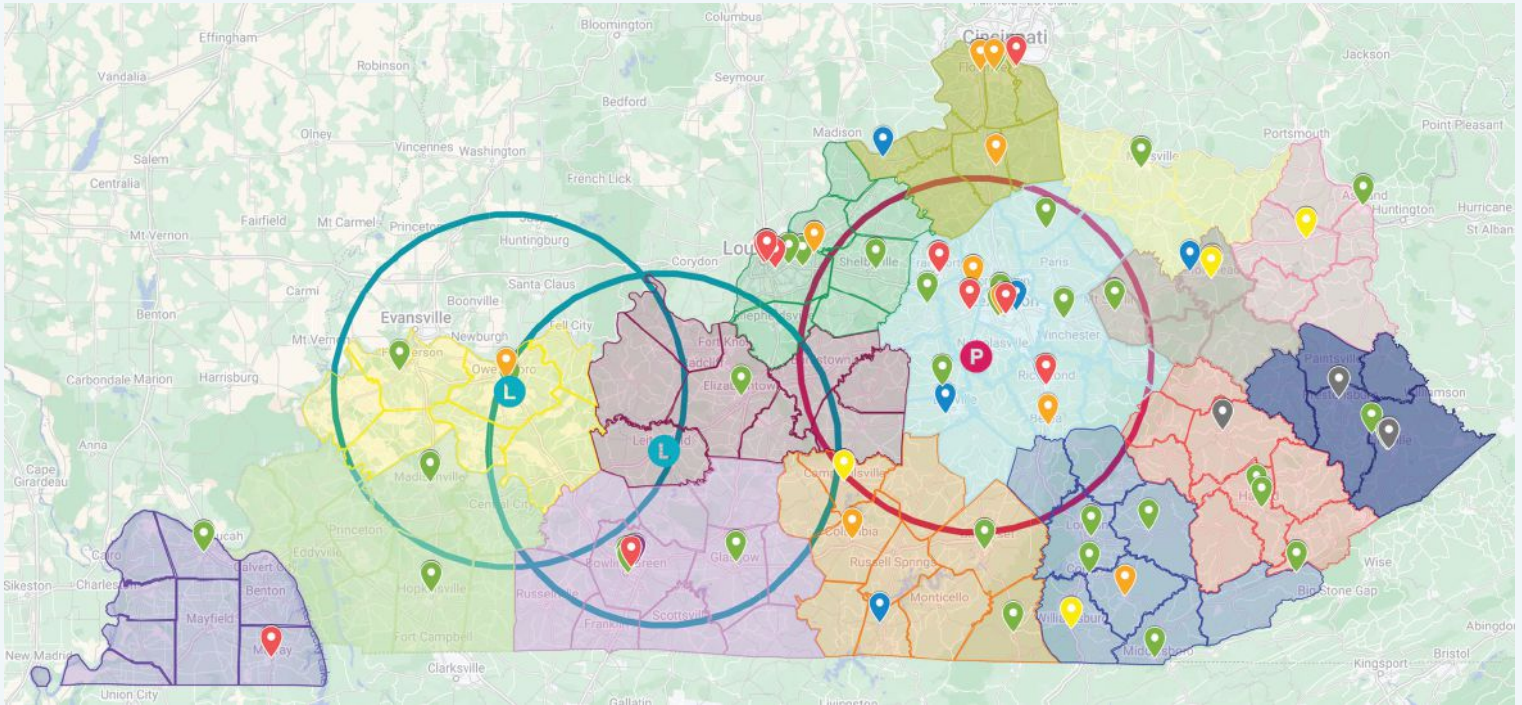
The second section, Enrollment & Grads, shows trends for enrollment, graduates, and faculty turnover by geography.

The third section, Projected Demand, shows 5-Year job projections for healthcare occupations by the Local Workforce Areas in Kentucky.


The fourth section, Hospital Vacancies, shows information around shortages, vacancy rates, and turnover rates for nurses.

The last section, Program Map, shows precicensure nursing programs across Kentucky.


See <https://kbn.ky.gov/education/Pages/Nursing-Workforce-Projection-Model.aspx> for further information.



 PN Programs

 ASN Programs

 BSN Programs

 MEPN Programs

 MSN Programs

 DNP Programs

Pre-Approval

 Asbury University, BSN - Wilmore (Proposal)

 Elizabethtown Community & Technical College, PN - Leitchfield (Letter of Intent)

 Madisonville Community & Technical College, PN - Owensboro (Letter of Intent)

Continued on page 22 >>

home
of the innocents



Make an impact on the
lives of children with
complex medical needs.



homeoftheinnocents.org/careers

KENTUCKY

KNF
KENTUCKY NURSES FOUNDATION

HONOR KENTUCKY NURSES LICENSE PLATE

Order one today to show your professional pride!



\$44 COST FOR PLATE
Additional cost for personalization.
Prices subject to change.

\$10 FROM EACH PLATE
SUPPORTS NURSES
Funds scholarship and research.



**"HONOR KENTUCKY NURSES"
LICENSE PLATE NOW AVAILABLE!**

This special license plate is a great way to celebrate and honor the important work of nurses in our Commonwealth.

**FOR NURSES AND SUPPORTERS
* HOW TO GET YOURS! ***

All nurses -- or anyone who supports nurses -- are invited to get one! Apply at your local County Clerk's Office or scan the barcode.



Become A CRNA at Bellarmine

DNP-NURSE ANESTHESIA

- ✓ Dedicated Clinical Partner
- ✓ Complete Program Locally
- ✓ Designed for post-BSN students



Scan Code for More
Information or to Request
Your Transcript Review

bellarmine.edu/crna




BELLARMINE
NURSE ANESTHESIA



ENROLLMENT & GRADS - Statewide

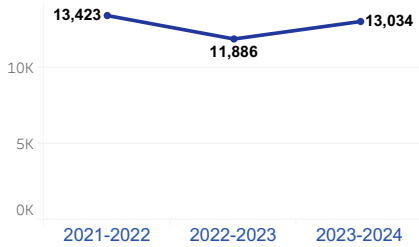
Prelicensure

Select an Area Type
State

Select an Area Value
Statewide

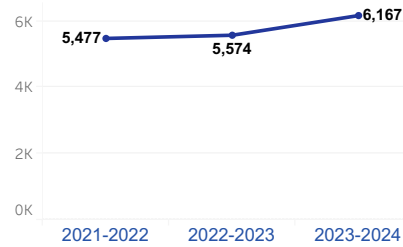
Total Enrollment

▲ 1,148 from Prior Year



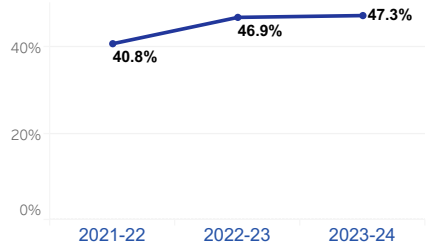
New Enrollment Counts

▲ 593 from Prior Year



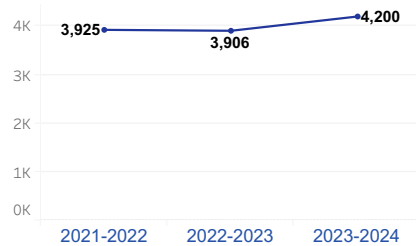
New Enrollment as % of Total Enrollment

▲ 0.4% from Prior Year



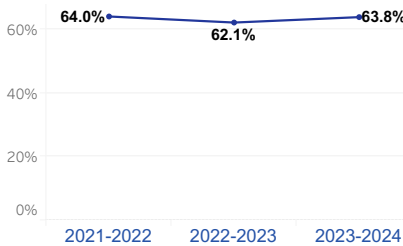
Total Graduates

▲ 294 from Prior Year



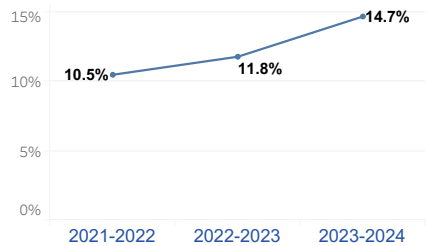
Graduation Rate

▲ 1.7% from Prior Year



Faculty Turnover Rate

▲ 2.9% from Prior Year



HOSPITAL VACANCIES - Statewide

Shortages, Vacancy Rates, and Turnover Rates (Source: KHA)

Select an Area
Statewide

About the Data

Data are from the Kentucky Hospital Association's (KHA) 2024 Workforce Survey Report and show data for the 2023 calendar year. This report provides an in-depth look at the non-physician hospital workforce in Kentucky. Acute care and specialty hospitals from all of the Area Development Districts (ADD's) of the state participated in the survey. For more information, please see the report here: <https://www.kyha.com/wp-content/uploads/2024/08/KHAWorkforceSurveyReport-2024.pdf>

Shortage

Other RN's	1,221
Med/Surg/Telemetry RNs	1,024
Critical Care RNs (ICU, CCU)	627
Emergency Room RNs	276
Licensed Practical Nurses (LPNs)	254
OR/PACU RNs	238
Psychiatric RNs	202
Labor/Delivery/Maternal Child RNs	127
Nurse Practitioner	103
Pediatric RNs	63
CRNAs	17

Vacancy Rate

18.3%
23.2%
18.5%
12.5%
18.6%
11.0%
24.4%
7.9%
9.8%
6.0%
5.6%

Turnover Rate

16.8%
19.1%
17.4%
16.6%
26.2%
7.5%
28.8%
13.3%
9.8%
12.4%
11.6%

FAMILY
Allergy & Asthma

**Looking for
Amazing Nurses to
Join our Family!**

Over 30 locations throughout Kentucky!

Offices in the Metro Areas of Bardstown,
Elizabethtown, Frankfort, Lexington,
Louisville, Richmond, Shepherdsville,
and more!

APPLY AND VIEW OPENINGS HERE:
FamilyAllergy.com/Apply

Care. **Advocacy.** Service.
Integrity. **Accountability.** Fun.

**JOIN OUR
TEAM!**



Registered Nurses
Emergency Room
Special Care Units (CCU)
MedSurg

\$10,000 Sign-on Bonus!



For more information, contact
T.J. Regional Health Human Resources at:
270.651.4259

Apply now!



**TARGETED
ADVERTISING
FOR THE MEDICAL
PROFESSIONAL**



Advertise HERE

Contact **Michele Forinash**
at **501-725-3560**

mforinash@pcipublishing.com



**NURSE
ANESTHESIA
PROGRAM**



Nurse Anesthesia



LEARN MORE!

evansville.edu/CRNA

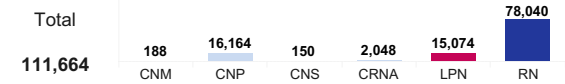


NURSING SUPPLY - All Licensures (2024)

Select Area Employed Type: State | Select an Area Employed Value: All | Select a Metric: Planning to Retire (in Years) | Year: 2024



Licensures by Occupation



Licensures by Gender

	CNM	CNP	CNS	CRNA	LPN	RN
Female	100.0%	90.8%	95.4%	55.9%	93.9%	90.8%
Male		9.2%	3.9%	44.0%	6.1%	9.2%
Non-binary		0.0%	0.7%	0.0%		0.0%

License by Race

	CNM	CNP	CNS	CRNA	LPN	RN
American Indian ..		0.4%		0.5%	0.5%	0.3%
Asian		2.2%		2.6%	1.1%	2.5%
Black/African Am..	4.4%	6.9%	1.3%	3.7%	14.2%	5.6%
White/Caucasian	94.6%	89.1%	98.1%	89.8%	83.0%	90.1%
Choose not to an..	1.0%	1.0%	0.6%	3.0%	0.6%	0.8%
Other Race		0.5%		0.5%	0.7%	0.7%

Licensures by Planning to Retire (in Years)

	CNM	CNP	CNS	CRNA	LPN	RN
Less than 3 years	8.51% (n=16)	1.91% (n=309)	9.33% (n=14)	5.57% (n=114)	4.22% (n=636)	4.37% (n=3,413)
3-5 years	4.26% (n=8)	3.97% (n=642)	16.67% (n=25)	6.74% (n=138)	6.37% (n=960)	6.04% (n=4,710)
5-10 years	13.30% (n=25)	9.74% (n=1,575)	24.00% (n=36)	12.45% (n=255)	11.28% (n=1,700)	10.57% (n=8,252)
10-15 years	14.36% (n=27)	17.55% (n=2,836)	14.67% (n=22)	19.24% (n=394)	14.67% (n=2,211)	13.23% (n=10,323)
15-20 years	24.47% (n=46)	23.14% (n=3,741)	18.67% (n=28)	22.46% (n=460)	18.59% (n=2,803)	17.41% (n=13,590)
Greater than 20 years	34.04% (n=64)	42.64% (n=6,892)	14.00% (n=21)	33.40% (n=684)	40.53% (n=6,109)	42.58% (n=33,230)
Already Retired	1.06% (n=2)	1.05% (n=169)	2.67% (n=4)	0.15% (n=3)	4.35% (n=655)	5.79% (n=4,522)

*Data from 2024 KY nurse license renewals (excludes those licensed after May 1, 2024).



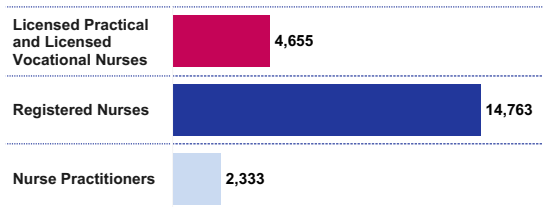
PROJECTED DEMAND - Statewide Five-Year Projected Demand (Source: KYLMI)

Select an Area: Statewide

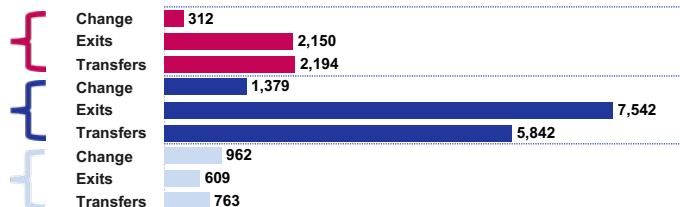
Understanding Five-Year Projected Job Demand (2022-2027)

Occupational projections are created for the state and each of Kentucky's Local Workforce Areas (LWA). **Change** is calculated as the amount needed for an occupation's employment to reach the five-year projected levels. Change is sometimes referred to as "growth" or "decline." **Exits** are referring to exits from the labor force, such as retirement. **Transfers** are those leaving an occupation for a different occupation. For example, a registered nurse leaving their job at one hospital for another is not considered a transfer. However, if a registered nurse leaves their job to become a school teacher, this would count as a transfer. **Total Job Openings** is a sum of change, exits, and transfers. Total Job Openings is a five-year projection (2022-2027). *Data Source: Kentucky Labor Market Information at KYSTATS.*

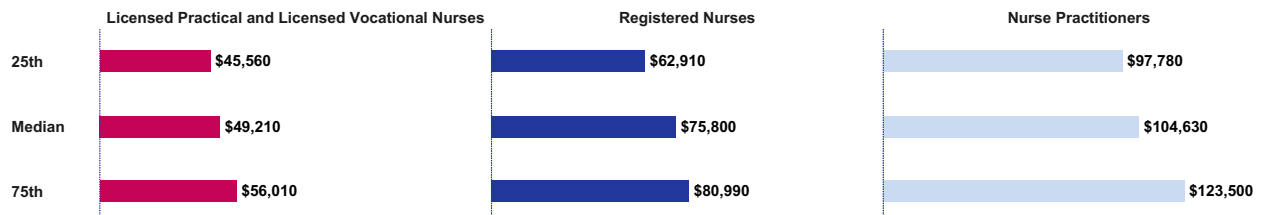
Total Five-Year Projected Job Openings



Breakout of Five-Year Projected Job Openings



Wage Information (Percentiles)





Understanding the Link Between Chronic Disease and Depression

From the NATIONAL INSTITUTE of MENTAL HEALTH

What is a chronic disease?

A chronic disease is a condition that lasts at least one year and requires ongoing medical attention or limits activities of daily living or both. Examples of chronic diseases include autoimmune diseases, diabetes, cancer, epilepsy, heart disease, HIV/AIDS, hypothyroidism, multiple sclerosis, and pain.

Can chronic disease lead to depression?

People who have a chronic disease are at a higher risk of developing depression. Depression can be triggered by:

- Anxiety, stress, or other challenges caused by a chronic disease
- Brain changes from a chronic disease (such as Parkinson's disease or stroke)
- Medication used to treat a chronic disease
- A personal or family history of depression or suicide

Research suggests that people who have a chronic disease and depression tend to have more severe symptoms of both illnesses.

Can depression lead to chronic disease?

People who have depression are at higher risk of developing certain chronic diseases, including heart disease, diabetes, stroke, pain, osteoporosis, and Alzheimer's disease. This may be due to:

- Challenges completing tasks that are good for health, such as eating well and exercising, due to symptoms like fatigue
- Challenges accessing medical care that could help prevent, detect, or treat physical health issues early and avoid the progression of a chronic disease
- Changes in the way the body functions due to depression, such as increased inflammation, reduced blood circulation and heart rate control, and abnormalities in stress hormones

What are the signs and symptoms of depression?

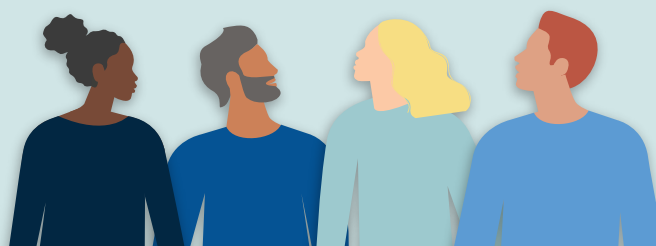
Common signs and symptoms of depression include:

- Persistent sad, anxious, or "empty" mood
- Feelings of hopelessness or pessimism
- Feelings of irritability, frustration, or restlessness
- Feelings of guilt, worthlessness, or helplessness
- Loss of interest or pleasure in hobbies and activities
- Fatigue, lack of energy, or feeling slowed down
- Difficulty concentrating, remembering, or making decisions
- Difficulty sleeping, waking too early in the morning, or oversleeping
- Changes in appetite or unplanned weight changes
- Physical aches or pains, headaches, cramps, or digestive problems without a clear physical cause that do not go away with treatment
- Thoughts of death or suicide or suicide attempts

Not everyone who is depressed experiences all of these symptoms. Some people may only experience a few symptoms, while others experience many. Depression symptoms interfere with day-to-day functioning and cause significant distress for the person experiencing them.

If you show signs or symptoms of depression and they persist or do not go away, talk to a health care provider.

If you or someone you know is struggling or having thoughts of suicide, call or text the 988 Suicide and Crisis Lifeline at **988** or chat at **988lifeline.org**. In life-threatening situations, call **911**.



Continued on page 26 >>

How is depression treated?

Depression is treatable—even if you have a chronic disease.

Depression treatment typically involves psychotherapy (in person or virtual), medication, or both.

A health care provider can help you choose the right treatment plan based on your needs, preferences, and existing medical conditions. Tell the provider about the medications you take and treatments you undergo to avoid multiple medications interfering with one another.

If you cannot or do not wish to take antidepressant medication, other evidence-based treatments are available, including psychotherapy, brain stimulation therapy, and light therapy.

You may have to try a few treatments to find the best one for you. With treatment, you can feel better. For more information on treatments for depression, visit www.nimh.nih.gov/depression.

Research suggests that a “collaborative care approach” can improve the overall health of people with depression. In this approach, primary care providers, care managers, and psychiatric consultants work together to provide mental and physical health care at the same location. Collaborative care is not yet available in all primary care offices or clinics—ask your health care provider if it’s an option for you.

How can I find help?

If you have concerns about your mental health, talk to a primary care provider. They can refer you to a qualified mental health professional, such as a psychologist, psychiatrist, or clinical social worker, who can help you figure out the next steps. Find tips for talking with a health care provider about your mental health at www.nimh.nih.gov/talkingtips.

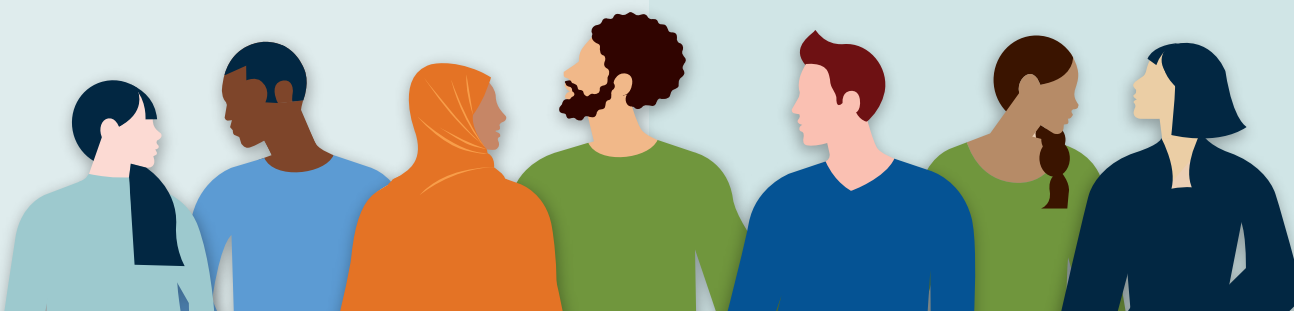
You can learn more about getting help at www.nimh.nih.gov/findhelp. The Substance Abuse and Mental Health Services Administration (SAMHSA) provides information about finding support at <https://findsupport.gov> and locating mental health services in your area at <https://findtreatment.gov>.

What are clinical trials and why are they important?

Clinical trials are research studies that look at ways to prevent, detect, or treat diseases and conditions. These studies help show whether a treatment is safe and effective in people.

Some people join clinical trials to help doctors and researchers learn more about a disease and improve health care. Other people, such as those with health conditions, join to try treatments that aren’t widely available.

NIMH supports clinical trials across the United States. Talk to a health care provider about clinical trials and whether one is right for you. For more information, visit www.nimh.nih.gov/clinicaltrials.



Reprints

The information in this publication is in the public domain and may be reused or copied without permission. However, you may not reuse or copy images. Please cite the National Institute of Mental Health as the source. Read our copyright policy to learn more about our guidelines for reusing NIMH content at www.nimh.nih.gov/copyright.



National Institute
of Mental Health

NIH Publication No. 24-MH-8015
Revised 2024

www.nimh.nih.gov

Contact: nimhinfo@nih.gov

Follow us on social media @NIMHgov



APRN COMPLIANCE CORNER

HIPAA COMPLIANCE FOR THE APRN

Marina McWilliams, APRN, MSN, NP-C, APRN
Investigations Branch Manager



This article reviews the Health Insurance Portability and Accountability Act of 1996 (HIPAA) regulations, how violations are addressed, and the role of regulators in preventing and addressing such breaches. Every Advanced Practice Registered Nurse (APRN) is responsible to ensure HIPAA compliance. Unauthorized access of medical records is a violation of the Health Insurance Portability and Accountability Act of 1996 (HIPAA) regulations and is considered a HIPAA breach. Most healthcare settings use electronic medical records, an audit log captures each keystroke of computer activity and reveals every person's activity in a designated electronic medical record. An audit log and the ability to conduct an audit log are required under the Technical Safeguards of the Security Standards of HIPAA and was put into place so that a patient can know who accessed their medical record at any given time.

The American Nurses Association (ANA) believes that protection of the right to privacy and the nurse's duty to maintain confidentiality are foundational to the ethical obligation to respect individuals' dignity and autonomy. This is a central means to foster and maintain the trusting relationship between health care providers and patients (ANA, 2015). ANA supports legislation, policies, and standards that protect rights to privacy as well as assure confidentiality of individually identifiable health information.

What Constitutes a Breach?

A breach is "the acquisition, access, use, or disclosure of [PHI] in a manner not permitted ... which compromises the security or privacy of the [PHI]" (45 C.F.R. § 164.402, 2013). In other words, unpermitted or unauthorized access or use is a breach. Reviewing the medical record of a patient you are not caring for is unauthorized access and a breach.

Who Can Access Medical Records Under HIPAA?

Pursuant to the Privacy Rule of HIPAA, a covered entity (which is defined in the regulations as a healthcare provider, healthcare plan, or healthcare clearinghouse) is only permitted to use or disclose protected health information to the individual (patient) or to use in treatment, payment, or healthcare operations. Therefore, unless you are the patient or are rendering care and treatment to the patient, there is no legitimate reason for accessing a patient's medical record and such unauthorized access is a breach (45 C.F.R. § 164.402, 2013; 45 C.F.R. § 160.103, 2013).

Required Sanction Policies

Although not often discussed, there are other required safeguards that covered entities must have under HIPAA regulations (45 C.F.R. § 164.308-312, 2013). Under the administrative safeguards, there is a sanction policy that states the covered entity must have and "apply appropriate sanctions against workforce

Continued on page 28>>



UNC
HEALTH®

Join our One Great Team, where nurses come to grow!

Enjoy perks such as:

- Up to \$25K in Commitment or Tuition Loan Incentives
- Up to \$10K in Relocation Assistance
- 75% reduction in out-of-pocket medical costs
- Residency Programs-Transition to Practice
- Magnet Recognition

jobs.unchealthcare.org



Continued from page 27>>

members who fail to comply with the security policies and procedures of the covered entity” (45 C.F.R. § 164.308a(1)(ii) C, 2013). Every hospital system or covered entity that has electronic health records is required to have policies and procedures that address ramifications and consequences of unauthorized access to medical records. This applies to APRNs who own their own practice.

Consequences for Unauthorized Access:
Not Just Termination

A HIPAA breach can result in:

- steep penalties
- termination
- fines
- prison time
- loss of nursing license
- litigation

At-will employees work at the pleasure of the employer without a contract; therefore, they can be terminated for any reason. Another consequence of a HIPAA breach is the little-known “notice to the public,” which includes notification to the state board of nursing (BON) and potential future employers, as follows:

- Whenever a proposed penalty becomes final, the Secretary of the Department of Health and Human Services will notify, in such manner as the Secretary deems appropriate, the public and the following organizations and entities thereof and the reason it was imposed: the appropriate State or local medical or professional organization, the appropriate State agency or agencies administering or supervising the administration of State health care programs (as defined in 42 U.S.C. 1320a-7(h)), the appropriate utilization and quality control peer review organization, and the appropriate State or local licensing agency or organization (including the agency specified in 42 U.S.C. 1395aa(a), 1396a(a)(33)). (45 C.F.R. § 160.426, 2013)
- When a HIPAA breach occurs, the Secretary of the Department of Health and Human Services can notify the state BON, which ultimately can impact licensure status. The U.S. Department of Justice has held

Continued on page 30>>

Teen Depression: More than just moodiness



Being a teenager can be tough, but it shouldn't feel hopeless. If you have been feeling sad most of the time for a few weeks or longer and you're not able to concentrate or do the things you used to enjoy, talk to a trusted adult about depression.

Do I have depression?



- Do you often feel sad, anxious, worthless, or even “empty”?



- Have you lost interest in activities you used to enjoy?



- Do you get easily frustrated, irritable, or angry?



- Do you find yourself withdrawing from friends and family?

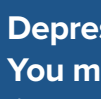


- Are your grades dropping?

- Have your eating or sleeping habits changed?



- Have you experienced any fatigue or memory loss?



- Have you thought about suicide or harming yourself?

Depression looks different for everyone. You might have many of the symptoms listed above or just a few.

How do I get help for depression?



- **Talk to a trusted adult** (such as your parent or guardian, teacher, or school counselor) about how you've been feeling.



- **Ask your doctor** about options for professional help. Depression can be treated with psychotherapy (also called “talk therapy”), medication, or a combination of medication and talk therapy.



- **Try to spend time with friends or family**, even if you don't feel like you want to.



- **Stay active and exercise**, even if it's just going for a walk. Physical activity releases chemicals, such as endorphins, in your brain that can help you feel better.



- **Try to keep a regular sleep schedule.**



- **Eat healthy foods.**

You're not alone, and help is available. You can feel better.

To get help, call or text the 988 Suicide & Crisis Lifeline at 988 or chat at [988lifeline.org](https://www.988lifeline.org).



nimh.nih.gov/depression

NIMH Identifier No. OM 22-4321

that covered entities and specified individuals who “knowingly” obtain or disclose individually identifiable health information in violation of the Administrative Simplification Regulations face a fine of up to \$50,000 and/or imprisonment up to 1 year. The penalty can be increased to a \$100,000 fine and/or up to 5 years in prison for violations “committed under false pretenses.” Finally, offenses committed “with intent to sell, transfer, or use individually identifiable health information for commercial advantage, personal gain or malicious harm” permit fines of up to \$250,000 and/or imprisonment for up to 10 years (42 U.S.C. § 1320d-6, 2009; Bradbury, 2005).

Reporting a Breach

There are strict reporting requirements after a HIPAA breach. Pursuant to HIPAA Regulation 45:

A covered entity shall, following the discovery of a breach of unsecured protected information, notify each

individual whose unsecured protected health information has been, or is reasonably believed by the covered entity to have been, accessed, acquired, used, or disclosed as a result of such breach (45 C.F.R. 164.404, 2013).

Additionally, under HIPAA Regulation 45 C.F.R. § 164.408 (2013), “a covered entity shall, following the discovery of a breach of unsecured protected health information,” notify the secretary of the Department of Health and Human Services, who can notify state BONs.

Conclusion

Breaches are common and provide an example of how the biggest threat to security often comes from an organizational insider. “Insider threats” are security risks posed by people who already have access to PHI. All healthcare settings should ensure that personnel are aware of HIPAA rules and the facilities’ policy on consequences regarding such breaches.

Likewise, APRNs must remain respectful of patient privacy. Before there were HIPAA rules, there were privacy and confidentiality rules. Simply do not look for, or disclose, private

information. APRNs should review and know their facility’s HIPAA policy and the consequences of a violation. Additionally, when discussing patients or accessing patient records, APRNs should continue to avoid careless mistakes. Finally, APRNs need to be familiar with the social media policy of their state BON and employer.

KRS 314.091(1)(n):

Violation of Confidentiality of Information or Knowledge Concerning any Patient, Except as Authorized or Required by Law.

According to the Kentucky Board of Nursing Guidelines for APRN Disciplinary Actions, this violation will result in a Reprimand or Limited/Probation and a Civil Penalty of \$1,000 to \$2,000.

Violations of federal law are reported to the National Practitioner Data Bank (NPBD) and could affect past and future reimbursements for the APRN.

References

Code of Federal Regulations (annual edition) AE 2.106/3:45/Contained Within Title 45 - Public Welfare Subtitle A - DEPARTMENT OF HEALTH AND HUMAN SERVICES Subchapter C - ADMINISTRATIVE DATA STANDARDS AND RELATED REQUIREMENTS Part 164 - SECURITY AND PRIVACY, Subpart D - Notification in the Case of Breach of Unsecured Protected Health Information, Section 164.402 - Definitions. Retrieved from <https://www.gpo.gov/fdsys/granule/CFR-2011-title45-vol1/CFR-2011-title45-vol1-sec164-402>, 2013

Health Insurance Portability and Accountability Act of 1996, Pub. L. 104-191, 110 Stat. 1936, 1996. Retrieved from <https://www.gpo.gov/fdsys/pkg/PLAW-104publ191/pdf/PLAW-104publ191.pdf>

Privacy and Accountability. American Nurses Association. Nursing World, February 2024, Retrieved from: <https://www.nursingworld.org/practice-policy/nursing-excellence/official-position-statements/id/privacy-and-confidentiality/>

When Is Accessing Medical Records a HIPAA Breach? De Simone, Donna M. Journal of Nursing Regulation, Volume 10, Issue 3, 34 – 36, Published in issue: October 2019

Achieve your goals with us.

Are you a Registered Nurse?

The RN to BSN Program at Murray State University will help you advance your career.

- 100% online
- Caring faculty
- Affordable tuition
- May complete as quickly as 2 semesters or up to 5 years based on your work-life balance



School of Nursing and Health Professions

Apply today:
murraystate.edu/sonhp

**SUPPORTING
OUR
HEROES
SINCE 1993**

ADVERTISE WITH US.
CONTACT
MICHELE FORINASH
at **1-800-561-4686**
ext 112
mforinash@pcipublishing.com



THE OHIO STATE UNIVERSITY
COLLEGE OF NURSING



**Answer your calling to care
as a nurse practitioner!**

Advance your career and your impact
through one of America's top ranked
programs:

- MS in Nursing
- BSN to DNP
- Post-Master's Study Option
- Grad Entry (for non-nurses)

*Online and in-person learning options
available across many specialties.*



Learn more and apply to
become a Buckeye Nurse:
nursing.osu.edu

CC 37

COALITION CONFERENCE
Northern Kentucky Convention Center | Covington, KY

3 5 81
DAYS WORKSHOPS SESSIONS

APRIL 23-25, 2025
Register before March 23, 2025 and save!
kynp.org/conference

Kentucky Association of
Nurse Practitioners
& Nurse-Midwives



KENTUCKY BOARD OF NURSING

2025 Nurse Incentive Scholarship Fund (NISF) Award

The Kentucky Board of Nursing (KBN) continues its proud tradition of supporting aspiring nurses through its Nurse Incentive Scholarship Funds (NISF). Each year, KBN awards approximately 130 nursing scholarships to deserving students, providing crucial financial assistance to help them achieve their dreams of becoming healthcare professionals.

The NISF is a lifeline for students enrolled in nursing programs across Kentucky, offering significant support as they navigate the challenges of education and training. The 2025-2026 application period is now open, running from January 1, 2025, to May 31, 2025. This window provides a vital opportunity for students to secure funding for their academic journey.

To be eligible, applicants must be actively enrolled in a nursing program and meet specific criteria outlined by KBN. The funds awarded through NISF not only ease the financial burden of tuition but also reinforce KBN's commitment to fostering a strong, skilled nursing workforce in the Commonwealth.

Don't miss the chance to be part of this impactful program. Applications can be submitted online through the KBN website. Take the first step toward securing your future in nursing today!



Nurses House, Inc. is a national 501(c)(3) organization helping registered nurses in need. Nurses House assists RNs with housing expenses, including rent or mortgage payments. If you or a nurse you know are in need of assistance due to a health crisis or other dire situation, visit the Nurses House website or email today for more information.

Nurses House relies on donations from nurses, the nursing community, and others who care. Please email or visit our website to learn how you can help.

www.nurseshouse.org
mail@nurseshouse.org



SUPPORTING
HEROES
SINCE 1993

ADVERTISE WITH US.
 CONTACT MICHELE FORINASH
 at 1-800-561-4686 ext 112
mforinash@pcipublishing.com



FRONTIER NURSING UNIVERSITY®

Creating a Culture of Caring

Earn an **MSN** or **DNP** through our Innovative Distance Education Programs



Specialties Offered:

- Certified Nurse-Midwife
- Family Nurse Practitioner
- Women's Health Care Nurse Practitioner
- Psychiatric-Mental Health Nurse Practitioner

"Faculty and staff were extremely invested in my success and very supportive... Frontier had a lot of emphasis on rural medicine and helping underserved people."

— DR. VIKTORIYA KASHIN, DNP, FNP
 FNU Alumna



frontier.edu/kbn

Disciplinary Actions

Since the publication of the last edition of the KBN Connection, the Board has taken the following actions related to disciplinary matters as authorized by the Kentucky Nursing Laws (KRS) Chapter 314. Licensure status of licensees against whom temporary action has been taken may have changed since data collection and publication. Please visit the Kentucky Board of Nursing License Validation Portal at <https://kybn.boardsofnursing.org/licenselookup> to confirm current licensure status of individual nurses.

COPIES OF INDIVIDUAL NURSE'S DISCIPLINARY ORDERS CAN BE VIEWED OR OBTAINED AT THE WEBSITE: www.Nursys.com

CEASE AND DESIST ISSUED

Dean, Rachel	SRNA # 50028571	Bardstown, KY	Eff. 1/3/25
Haire, Lauren Michelle		Henderson, KY	Eff. 10/3/24
Lopez Ruiz, Lazaro		Irving, TX	Eff. 10/23/24
Martin, Sandra Lopez		Louisville, KY	Eff. 10/23/24
Pacheco Macias, Mayra		Lexington, KY	Eff. 11/21/24
Robinson, Ashley		Fulton, KY	Eff. 10/2/24
Tapp, Mary Beth		Sebree, KY	Eff. 10/9/24

IMMEDIATE TEMPORARY SUSPENSION OF LICENSE/CREDENTIAL

Daugherty, Dusti	RN License 1163823	Louisville, KY	Eff. 11/12/24
Gregory, Rodnisha Carolyn	LPN License 4002110	Louisville, KY	Eff. 10/11/24
McCubbins, Mary Adams	RN License 1134110	Shepherdsville, KY	Eff. 10/1/24
Meeks, Maranda Delphine	LPN License 2036359	Brandenburg, KY	Eff. 10/28/24
Morris, Monica L.	LPN License 2039402	Pikeville, KY	Eff. 9/25/24
Sanders, Wendy Michelle	RN License 1098789	Fisherville, KY	Eff. 12/4/24
Sidebottom, Christina Louise	RN License 1115470	Smiths Grove, KY	Eff. 11/8/24
Smith, Karen	RN License 1082747	Smithland, KY	Eff. 1/8/25
Stewart, Darryl	RN License 1173015	Bledsoe, KY	Eff. 12/23/24
Wheeler, Melissa Carol	LPN License 2041309	Fulton, KY	Eff. 12/13/24

IMMEDIATE TEMPORARY SUSPENSION OF PRIVILEGE TO PRACTICE

Denton, Marissa J.	MD RN License R220554	Baltimore, MD	Eff. 12/26/24
--------------------	-----------------------	---------------	--------------------

LICENSE/CREDENTIAL SUSPENDED

Cheek, Brittany Justine	RN License 1162122	Borden, IN	Eff. 10/24/24
Childers, Taylor Lynn	LPN License 2051800	Louisville, KY	Eff. 10/24/24
Dunn, Maranda	RN License 1126929	Lawrenceburg, KY	Eff. 10/24/24
Duvall, Sandra Denise	RN License 1084921	Caneyville, KY	Eff. 10/24/24
Edward, Amy	RN License 1145376	LaGrange, KY	Eff. 12/19/24
Elkins, Danica	RN License 4028461	Douglass Hills, KY	Eff. 1/3/25
Greenwell, Michael	RN License 1180514	Elizabethtown, KY	Eff. 12/19/24
Hamilton, Craig	RN License 1094772	Richmond, KY	Eff. 12/19/24
Harris, Erica Nichole	RN License 1112693	Madisonville, KY	Eff. 10/24/24
Harris, Trina	RN License 1094898	Sanders, KY	Eff. 12/19/24
Kendall, Amanda	RN License 1105254	Eastview, KY	Eff. 12/19/24
Mehlbauer, Connie	LPN License 2019680	Owensboro, KY	Eff. 12/19/24
Messinger, Patricia	RN License 1155120	Mineral Wells, WV	Eff. 10/24/24
Niev, Vincent	RN License 1157751	Sanders, KY	Eff. 10/24/24
Oakley, Sarah	RN License 1155618	Paris, KY	Eff. 12/19/24
Parsons, Kandy	DT Credential 8001617	Pikeville, KY	Eff. 10/24/24
Peacock, Sonya	RN License 1104441;	Louisville, KY	Eff. 10/24/24
	LPN License 2033517		
Pecina, Anna Mae	LPN License 2052040	Flemingsburg, KY	Eff. 10/24/24
Riddle, Jennifer Lynn	LPN License 2035478	Lexington, KY	Eff. 10/24/24
Roe, Cassie	RN License 1176903	Morehead, KY	Eff. 10/24/24
Shoemaker, Ashleigh	RN License 1111902	Fairdale, KY	Eff. 12/19/24
Smith, Jill	RN License 1110598	Ashland, KY	Eff. 12/19/24
Stewart, Ashley	RN License 1149387	Shelbiana, KY	Eff. 10/24/24
Taylor, Savanna	LPN License 2051507	Hodgenville, KY	Eff. 10/24/24
Troxel, Kerri	LPN License 2052110	Elkton, KY	Eff. 10/24/24
York, Janet	RN License 1076918	Adolphus, KY	Eff. 10/24/24

PRIVILEGE TO PRACTICE SUSPENDED

Anderson, Kimberly	MS LPN License 327448	Clarksville, TN	Eff. 10/24/24
Barron, Ashley	TN RN License 208739	Portland, TN	Eff. 10/28/24
Hope, John	IN RN License 28263915A	Clarksville, IN	Eff. 12/19/24
Kern, Ashley	IN RN License 28289287A	Louisville, KY	Eff. 12/19/24
Mitchell, Courtney	MS LPN License 318622	Amory, MS	Eff. 10/24/24
Pierce, John	NC RN License 140125	Lake Waccamaw, NC	Eff. 10/24/24
Travis, Nancy	VA LPN License 0002-082896	Pennington Gap, VA	Eff. 10/24/24
Zalsman, Lisa	TN RN License 177578	Troy, TN	Eff. 11/12/24

LICENSE/CREDENTIAL DENIED OR DENIED REINSTATEMENT

Arlin, Lisa	RN Applicant by Endorsement	Lawrenceburg, KY	Eff. 11/12/24
Belkin, Jordan	RN Applicant by Endorsement	Jersey City, NJ	Eff. 11/26/24
Bentley, Jimmy	LPN License 2039413	Grayson, KY	Eff. 10/1/24
Brown, Sharon	RN Applicant by Examination	Lathrop, CA	Eff. 12/19/24
Camilosa, Rachel Perez	RN Applicant by Examination	Discovery Bay, CA	Eff. 10/7/24
Clements, Marguerie	LPN License 2056826	Dayton, OH	Eff. 9/13/24
Dill, Jennifer	RN License 1137771	Eubank, KY	Eff. 10/24/24
Duff, Dinah	RN License 1083288	London, KY	Eff. 10/24/24
Evans, Lori Lynn	RN License 1118617	Louisville, KY	Eff. 10/24/24
Glodo, Lindsay	LPN License 2053857	Murray, KY	Eff. 10/24/24
Hoeh, Danelle Nicole	LPN Applicant by Endorsement	Union, KY	Eff. 10/24/24

Continued on page 36>>



Elder & Good, PLLC
Elder & Good, PLLC

THIS IS AN ADVERTISEMENT

NURSE LICENSE DEFENSE

Put our experience to work for you

*We represent nurses before the Kentucky and Ohio Boards of Nursing. **The most critical time to seek legal help is when a nurse receives a Notice of Complaint letter, which begins an investigation.** Proactive and effective representation from the beginning of an investigation by attorneys with extensive experience before the KBN can make the difference in avoiding discipline or litigation.*

We have that experience. Call for a free consultation.



L. Chad Elder

celder@eldergood.com

Brian R. Good

bgood@eldergood.com

BOARD INVESTIGATIONS • BOARD APPLICATION ISSUES • FORMAL BOARD COMPLAINTS
DISCIPLINARY HEARINGS & APPEALS • HOSPITAL DISCIPLINARY ACTIONS
CRIMINAL DEFENSE



Elder & Good, PLLC

159 St. Matthews Avenue, Suite 1

Louisville, Kentucky 40207

p 502.365.2800 • f 502.365.2801

www.eldergood.com

Honeycutt, Kathern	RN License 1099914	Union, KY	Eff. 10/24/24
Hotaling, Heather M.	RN License 1152054	Coxsacke, NY	Eff. 10/24/24
Kulka, Amanda Sayne	LPN License 2039138	Greenville, KY	Eff. 12/27/24
Lundy, Carlee	RN License 1127487	Shepherdsville, KY	Eff. 10/24/24
May, Timothy	RN License 1085618	McAndrews, KY	Eff. 12/19/24
Newman, Mary	RN License 1092863; APRN License 3007590	Radcliff, KY	Eff. 10/24/24
Plascencia, Rocio	RN Applicant by Examination	Winton, CA	Eff. 12/19/24
Price, Regina L.	LPN License 2050494	Paducah, KY	Eff. 10/24/24
Pullins, Loyce	LPN License 2039857	Louisville, KY	Eff. 10/24/24
Richardson, Taylor	RN License 1161697	Louisville, KY	Eff. 10/24/24
Ridener, Kathy	LPN License 2043190	Somerset, KY	Eff. 10/24/24
Santos, Melvyn	RN License 1153450	Homerglen, IL	Eff. 12/19/24
Sebastian, Gratiana Marie	LPN License 2055631	Paris, KY	Eff. 12/20/24
Toombs, Kimberly	RN License 1107448	Henderson, KY	Eff. 10/24/24
Urbina, Devante	LPN License 2055828	Louisville, KY	Eff. 12/19/24
Watts, Bethanie	RN License 1102396	London, KY	Eff. 10/24/24
PRIVILEGE TO PRACTICE DENIED REINSTATEMENT			
Judge, Aleisha	TN LPN License 79569	Martin, TN	Eff. 10/24/24
Osborne, Christina	AL RN License 1-1515	Millbrook, AL	Eff. 10/24/24
Perry, Brian	NE RN License 90237	Lincoln, NE	Eff. 10/24/24
Robbins, Emily	VA LPN License 0002082821	Clintwood, VA	Eff. 10/24/24
Thomas, Deborah	GA RN License RN285018	Rockmart, GA	Eff. 10/24/24
LICENSE/CREDENTIAL VOLUNTARILY SURRENDERED			
Allen, Melissa	RN License 1122574	Louisville, KY	Eff. 9/24/24
Cole, Noah	RN License 1178815	Georgetown, KY	Eff. 1/8/25
Dockery, Adam	RN License 1114583	Russell Springs, KY	Eff. 9/26/24
Glass, Donna Sue	LPN License 2030748	Argillite, KY	Eff. 10/8/24
Higdon, Donna	RN License 1069114	Roundhill, KY	Eff. 9/17/24
Holloman, Gwendolyn	RN License 1035547	Lexington, KY	Eff. 11/15/24
Lee, Stephan	RN License 4022448	Oak Grove, KY	Eff. 10/29/24
Sanders, Wendy Michelle	RN License 1098789	Fisherville, KY	Eff. 12/26/24
Smith, Allison Renee	RN License 1151254	Louisville, KY	Eff. 11/13/24
LICENSE/CREDENTIAL PLACED ON LIMITATION/PROBATION			
Amburgy, Patricia	RN License 1090213	Louisville, KY	Eff. 10/8/24
Beam, Olivia Paige	RN License 114352; APRN License 3014110	Owensboro, KY	Eff. 10/11/24
Bentley, Angela	RN License 1167103	Pikeville, KY	Eff. 11/26/24
Blaize, Amy	RN License 1155382	Henderson, KY	Eff. 12/9/24
Butts, Jeffrey	RN License 1112189	Gravel Switch, KY	Eff. 1/2/25
Carrillo, Cassandra	LPN License 2049390	Nicholasville, KY	Eff. 9/24/24
Clark, Sara Lynn	LPN License 2048503	Bowling Green, KY	Eff. 11/12/24
Frick, Ashley	RN License 1091370; APRN License 3004889	Louisville, KY	Eff. 11/12/24
Henderson, Megan Diana	RN License 1148958	Mt. Vernon, KY	Eff. 11/26/24
Henry, Marla Rae	RN License 1050261	Taylorsville, KY	Eff. 11/4/24
Langford, Sheila	RN License 1059928	Lexington, KY	Eff. 10/3/24
Lovings, Jaime Gale	RN License 1114232	Sellersburg, IN	Eff. 12/16/24
McAllister, Cary	RN License 1137714	Bowling Green, KY	Eff. 12/19/24
Ramsey, Angela	RN License 1111322	Hopkinsville, KY	Eff. 11/12/24
Schumacher, Amanda	RN License 1176681	Cincinnati, OH	Eff. 12/9/24
Vernon, Stephanie Elizabeth	RN License 1085689;	Lexington, KY	Eff. 1/6/25
Smith, Ashley Nicole	RN License 1136507	Maysville, KY	Eff. 8/27/24
LICENSE/CREDENTIAL REPRIMANDED			
Abdul-Rahmaan, Maha	LPN License 2057163	Louisville, KY	Eff. 11/15/24
Ball, Danyale June	LPN License 2038475	Mt. Sterling, KY	Eff. 10/8/24
Bartley, Shelebra	RN License 1093625	Pikeville, KY	Eff. 10/29/24
Berry, Kristy	LPN License 2039723	Jeffersonville, KY	Eff. 11/20/24
Carroll, Courtney Gail	RN License 1118386	Lancaster, KY	Eff. 11/25/24
Duncan, Victoria	RN License 1150878	Independence, KY	Eff. 12/9/24
Farmer, Aaron James	RN License 1141263	Williamson, WV	Eff. 12/17/24
Fitzpatrick, Hunter	RN License 1181553	Lexington, KY	Eff. 12/12/24
Froedge, Ashley	RN License 1096619	Columbia, KY	Eff. 11/13/24
Goodie, Mary Ann	RN License 1146309	London, KY	Eff. 1/3/25
Hall-Lamb, Carmen	RN License 1172275	Nicholasville, KY	Eff. 12/11/24
Hubbell, Tarah Jean	RN License 1121038	Steele, KY	Eff. 10/16/24
Jones, Deborah Elaine	RN License 1093374	Campbellsville, KY	Eff. 10/23/24
Kethley, Jerri	RN License 1100995	Prestonsburg, KY	Eff. 1/3/25
Kendrick, Tyler	RN License 1166449	Prestonsburg, KY	Eff. 9/26/24
Nickerson, Brittany	RN License 1165608	Lexington, KY	Eff. 9/24/24
Roby, Alyssa	RN License 1170024	Memphis, IN	Eff. 9/24/24
Roby, Codi	LPN License 2046800	Bardstown, KY	Eff. 10/2/24
Simpson, Natasha	RN License 1175658	Edmonton, KY	Eff. 12/2/24
Stringer, Deborah	LPN License 2046291	Scottsville, KY	Eff. 10/23/24
Warren, Bradlee	LPN License 2049910	Lexington, KY	Eff. 12/9/24
Wolford, Anna	RN License 1096270	Walton, KY	Eff. 10/2/24
Yinger, Ashton Brooke	RN License 1177077	Jeremiah, KY	Eff. 10/23/24

PRIVILEGE TO PRACTICE REPRIMANDED

Maranto, Lisa	IN RN License 28268716A	Ramsey, IN	Eff. 9/17/24
Strecker, Sydney	AR RN License 122377	Perryville, AR	Eff. 11/12/24

LICENSE CLEARED FROM DISCIPLINARY ACTION

Anderson, Rodrica	LPN License 4033718	Louisville, KY	Eff. 1/8/25
Andrews, Kara Nicole	RN License 1178865	Louisville, KY	Eff. 1/3/25
Bartley, Shelebra Kayne	RN License 1093625	Pikeville, KY	Eff. 11/6/24
Buchanan, Jessica	LPN License 2044878	Calvert City, KY	Eff. 11/25/24
Campbell, Thomas Owen	RN License 1162124	Paris, KY	Eff. 11/13/24
Cerridwen, Robin Tracy	RN License 1119846; APRN License 3005468	Georgetown, KY	Eff. 9/23/24
Chisholm, Anthony	RN License 1166082	Shelbyville, KY	Eff. 1/6/25
Couch, Christopher Lee	LPN License 2055499	Pineville, KY	Eff. 11/27/24
Fillmore, Randall Clay	RN License 1175292	Irvington, KY	Eff. 11/27/24
Fitzpatrick, Hunter	RN License 1181553	Lexington, KY	Eff. 12/18/24
Gillum, Amanda Jo	RN License 1166375	Ashland, KY	Eff. 11/20/24
Goodie, Mary Ann	RN License 1146309	London, KY	Eff. 1/9/25
Greenhill, Laroyal Olivia	LPN License 2045937	Louisville, KY	Eff. 10/2/24
Hall-Lamb, Carmen	RN License 1172275	Nicholasville, KY	Eff. 1/9/25
Hicks, Dana	RN License 1107931	Campbellsville, KY	Eff. 12/9/24
Hill, Sommer	RN License 1105831	Harrodsburg, KY	Eff. 12/20/24
Hammond, Samantha Dawn	LPN License 2048095	Warsaw, KY	Eff. 11/19/24
Huffman, Alexis	LPN License 2055914	Brandenburg, KY	Eff. 12/10/24
Kim, Cassaundra Jane	LPN License 2051444	Williamsburg, KY	Eff. 10/17/24
Kuchowicz, Tracey	RN License 1088698	Vine Grove, KY	Eff. 9/13/24
Marks, Briana Nicole	RN License 1166645	Louisville, KY	Eff. 12/26/24
McGee, Jeffrey Scott	RN License 1065563	Louisville, KY	Eff. 12/23/24
McKnight, Howard Scott	RN License 1088079	Bagdad, KY	Eff. 9/25/24
Middleton, Samantha Kay	RN License 1152626	Corbin, KY	Eff. 12/13/24
Neltner, Jeffrey Martin	RN License 1131314	Union, KY	Eff. 10/29/24
Niev, Vincent	RN License 1157751	Sanders, KY	Eff. 12/12/24
Nickerson, Brittany Marie	RN License 1165608	Lexington, KY	Eff. 10/22/24
Nunley, Jamie Michelle	RN License 1091467	Grayson, KY	Eff. 9/23/24
Osborne, Latesha Renee	RN License 1114069	Lexington, KY	Eff. 10/21/24
Rainbolt, Dawn Elizabeth	RN License 1077341	Clarksville, IN	Eff. 11/8/24
Rhoden, Jennifer Michelle	LPN License 2054452	Quincy, KY	Eff. 10/18/24
Roederer, Ericka Ann	RN License 1091603	Frankfort, KY	Eff. 10/21/24
Sanchez Fernandez, Olisday	LPN License 2055550	Shepherdsville, KY	Eff. 1/9/25
Slone, Christy Renee	RN License 1114010; APRN License 3009417	Stanton, KY	Eff. 1/7/25
Smith, Kelly Michelle	RN License 1157937	Bedford, KY	Eff. 12/23/24
Strecker, Sydney	AR RN License 122377	Perryville, AR	Eff. 12/19/24
Turner, Michelle Lynn	LPN License 2040640	Richmond, KY	Eff. 10/1/24
Wallace, Natausha	LPN License 2043441	Worthville, KY	Eff. 10/4/24
Walters, Rebecca	LPN License 2054452	Greenup, KY	Eff. 10/18/24
Wickham, Elizabeth	RN License 1168628	Cadiz, KY	Eff. 12/27/24
Williams Darcie Marie	RN License 1095328	Ironton, OH	Eff. 12/17/24
Wilson, Christina Catherine	RN License 1139357	Magnolia, KY	Eff. 12/17/24
Wojick, Linda Darnell	LPN License 2029533	Morgantown, KY	Eff. 10/28/24

CONSENT DECREES ENTERED FISCAL YEAR TO DATE

Imposition of civil penalty for practice without a current active license or temporary work permit	12	Imposition of civil penalty for falsification of an application for licensure	50
Imposition of civil penalty for failure to meet mandatory continuing education requirement	37	Imposition of civil penalty for a positive drug screen	5
Imposition of civil penalty for a practice issue	75		

Let's Talk About Eating Disorders

The way we talk about eating disorders matters.
Here are some facts to help you discuss them.



“Eating disorders are serious and can be fatal.”

Eating disorders often involve serious medical complications that can cause permanent damage or death. People with eating disorders also have an increased risk of dying by suicide.



“Eating disorders are caused by a variety of factors.”

Several factors can increase a person's risk of developing an eating disorder, including biological, psychological, and social factors. An eating disorder is not a lifestyle choice.



“Eating disorders can affect anyone.”

Eating disorders do not discriminate. They affect people of all ages, races, ethnicities, and genders.



“You can't tell if someone has an eating disorder by looking at them.”

People with eating disorders can be underweight, average weight, or overweight.



“Family members can be a patient's best ally during treatment.”

Family members can encourage a family member with eating or body image issues to seek help and provide support during treatment.



“It is possible to recover from an eating disorder.”

Recovery is possible with treatment and time.



National Institute
of Mental Health

nimh.nih.gov/eatingdisorders

NIMH Identifier No. OM 24-4317

JOIN OUR TEAM!

Apply today: ukjobs.uky.edu.

- **Competitive salary** scale for registered nurses.
- **Float pool flexibility** to build desired schedule.
- **New graduate and experienced RN sign-on bonus**, area restrictions.
- **Loan forgiveness**. Let us help you become debt-free.
- **Tuition benefits**. Continue progressing your career.
- **Relocation benefits**. We want to help you move.
- **200% match on retirement** contributions to help you save for the future!

Currently accepting applications from nurses in all areas - experienced and new graduates.



Scan the QR code for more information and to secure a spot at our upcoming interviewing event!

MAGNET
RECOGNIZED



AMERICAN NURSES
CREDENTIALING CENTER

Kentucky Board of Nursing
312 Whittington Pky., Ste 300
Louisville, KY 40222-5172

PRESORTED
STANDARD
U.S. POSTAGE
PAID
LITTLE ROCK, AR
PERMIT NO. 563

You could
be a nurse
anywhere.
Make your
mark here.



Norton Healthcare is unlike any health care system in our region. We're innovators and strategic thinkers. We're researchers, leaders and compassionate caregivers. We're a team.

When you join us, you may be eligible for one of our hiring programs, including commuter and relocation reimbursement and student loan repayment.

For more information, email recruitment@nortonhealthcare.org or call (800) 833-7975 to speak to a recruiter. Explore careers at NortonHealthcareCareers.com.

EOE, including disability/vets



NORTON
HEALTHCARE